

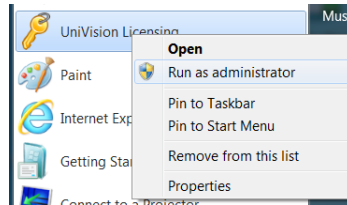
## Licensing PLC

### Licensing PLC with Univision Licensing

If you have received an error message 'Unlicensed Software >><< Contact Your Distributor' on start-up of your CX counter program then you may need to authorize your PLC for use with the CX Counter.

First download the 'Univision Licensing' software from the Unitronics website ([www.unitronics.com/support/downloads](http://www.unitronics.com/support/downloads))

Open the 'Univision Licensing' Software and run as administrator.

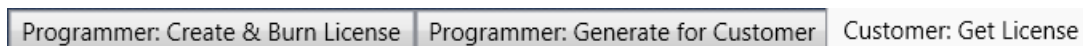


Once the Univision Licensing software is open, set the Communication parameters by selecting the correct COM Port etc. as you would for connecting in Visilogic.

Once Communication parameters are set check the connection to the PLC by clicking the 'Check Connection' in the bottom right corner of the screen. If the Connection is established then the 'PLC Information' fields will become populated.

PLC Model	OS Version	Boot Version	BinLib Version	PLC Name
SM43-J-R20	4.2(24)	2.2 (41)	0-2.50 (01)	10801934

Now you have your PLC connected to Univision Licensing open the 'Customer: Get License' tab



Click the Generate button-



This will create a long KeyGen code in the box to the left.

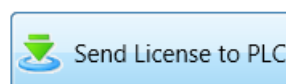
KeyGen:

This code is unique to your PLC and should be copied and E-mailed to your distributor along with the serial Number of your PLC.

Your distributor will use this code to generate a unique 'Customer License' for your PLC and send it back to you.

Customer License:

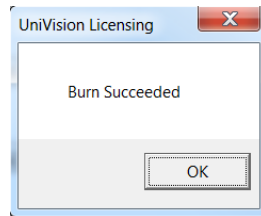
When you receive your unique 'Customer License' from your distributor paste this code into the 'Customer License' field in Univision Licensing and click 'Send License to PLC'.



Telephone: 01480 395256  
[www.i4automation.co.uk](http://www.i4automation.co.uk)  
sales@i4automation.co.uk

## Licensing PLC

Once the licence has been successfully burned onto the PLC this dialogue box will appear showing that the Licence has been successfully sent to the PLC and it is now licenced. Reset the PLC using Visilogic, now your CX Counter program should run in your PLC with no problems.



**Tom Johnson**  
**February 2016**