

## Replacing Samba PLC Battery

### Replacing Samba PLC Battery

The Samba PLC takes a CR2450N battery which are readily available from most hardware/electronics distributors or can be purchased directly from i4Automation.

*Note: Make sure you have backed up all data on the PLC or burnt the program into the PLC memory prior to replacing the battery as the battery cannot be replaced while the PLC is running.*

The instructions below feature a Samba 43 for representational purposes and are also relevant to the Samba 35 & 70 models.

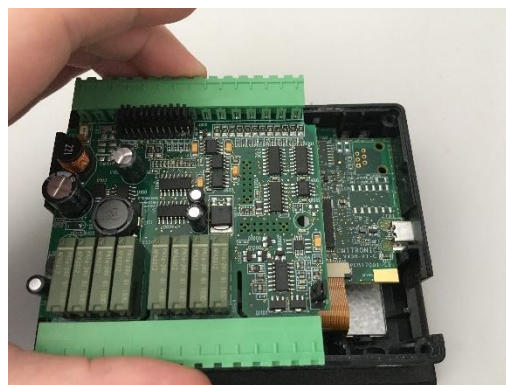
#### Remove the rear panel of the controller:

1. Turn off the power supply, disconnect and dismount the controller.
2. Locate the 4 Screws at the corners on the back of the controller.
3. Open the controller by un screwing these screws and pull off the back cover—remembering which holes the longer and shorter screws came from for re-assembly.



#### Remove the IO board:

- Once you have removed the back you will see the IO board with Jumpers exposed, the battery is under this IO Board
- To remove this IO Board, gently hold it with your thumb and forefinger and lift the board off its pins taking special care not to cause damage to the pins below.

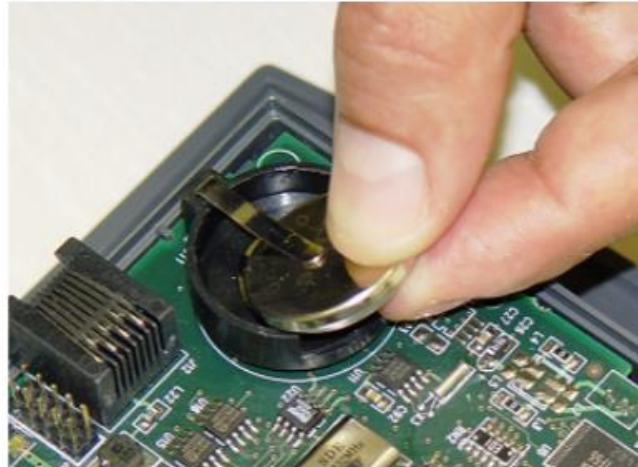


Now the IO board is removed you can see the battery slot has become exposed.

## Replacing Samba PLC Battery

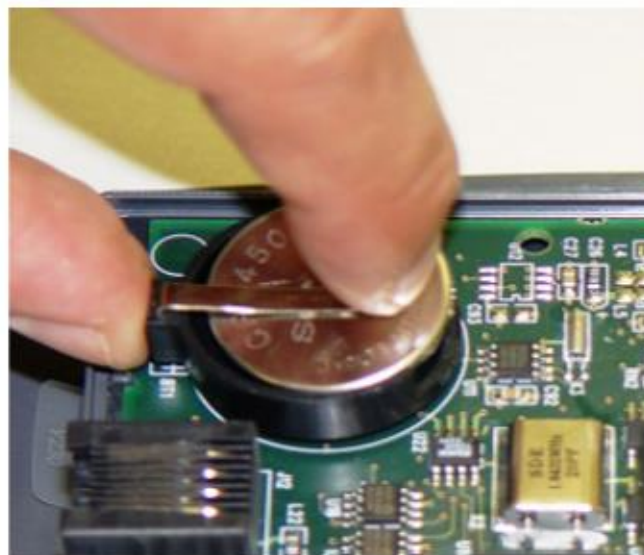
### Remove the Battery

- Remove the battery by holding it as shown in the picture below, and gently sliding it out from under the clip.



### Insert New Battery

- Slide the new battery sideways under the clip as shown. The clip must hold the battery securely. *Note: The side of the battery bearing text (+) must face up.*



## Replacing Samba PLC Battery

### Replace the IO Board

- After replacing the battery, gently replace the IO Board by locating the pins on the main board and orientating them precisely with the slots on the IO Board.
- Apply gentle pressure directly above the pins to re position the IO Board onto the PLC correctly – ensure the IO Board is pushed all the way down in a secure position.



**Then simply replace the rear panel onto the PLC and re-screw it back in place – And you're done!**

If you require any further assistance then feel free to contact i4 Automation directly, we are always happy to help.

**Tom Johnson**  
**August 2018**