

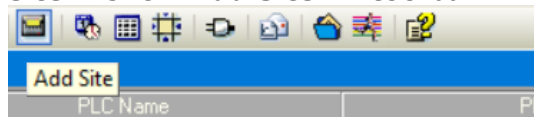
Data Logging from Data Xport

Logging data from PLC using Data Xport Utility

You may wish to upload data stored within registers in the PLC to your PC, the 'Data Xport' utility available from Unitronics will see you achieve just that. The Data Xport utility will upload the value of a range of operands stored in the PLC to individual .csv/.xls documents or store the information stored within a data table in your program to a .csv/.xls at intervals defined by the user within Data Xport as a schedule.

Setting up Data Xport to export operand Values

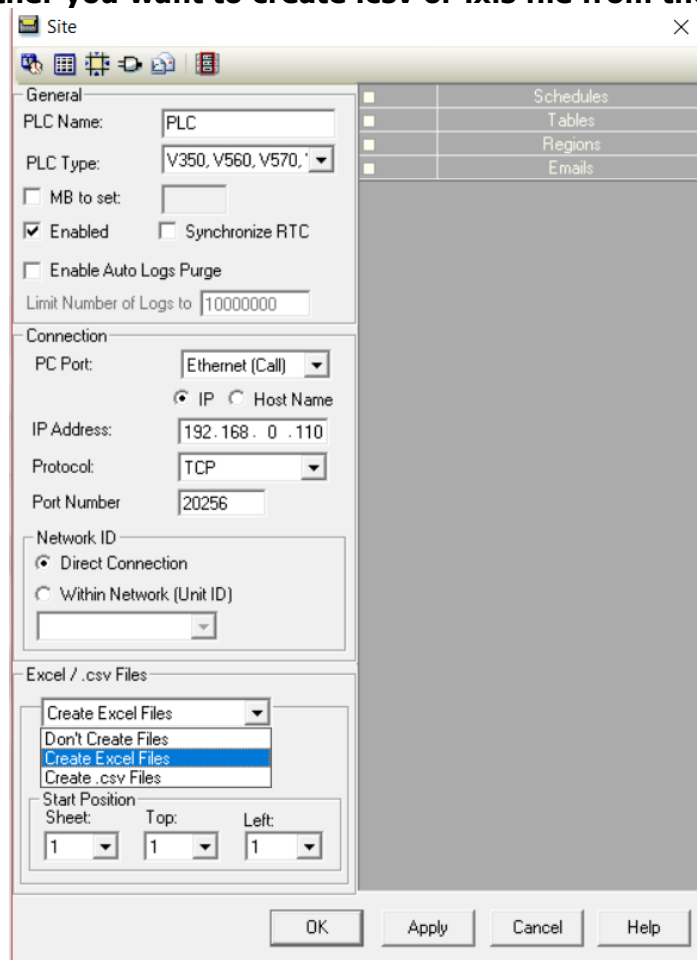
1) Add your PLC as a site – Click 'Add Site' in toolbar



2) Insert the PLC name & PLC type

3) Select a connection method and input the IP address & Port of your PLC (If you require communication over a PC port then set 1 up using the 'PC Port' in the toolbar at the top of the screen)

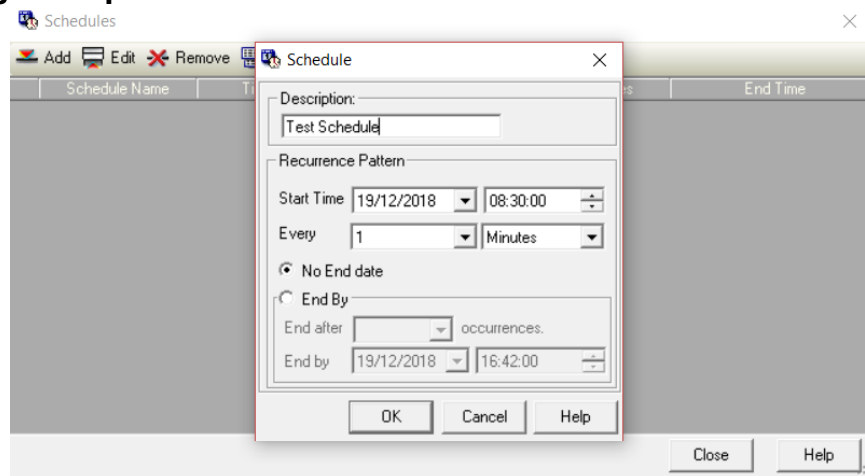
4) Choose whether you want to create .csv or .xls file from the dropdown box



Now you have set up the comms to the PLC you need to set schedules (The intervals at which the PLC will pull the data from the PLC).

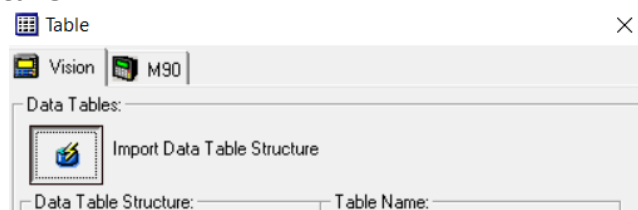
Data Logging from Data Xport

- 5) Double click on the schedules box and the 'Schedules' window will open. From here click the 'Add' button from the toolbar, Name your Schedule in the 'Description' box, set a start time and the interval at which you want the PLC to log the data from the PLC then if you wish enter an end Date for logging to stop.

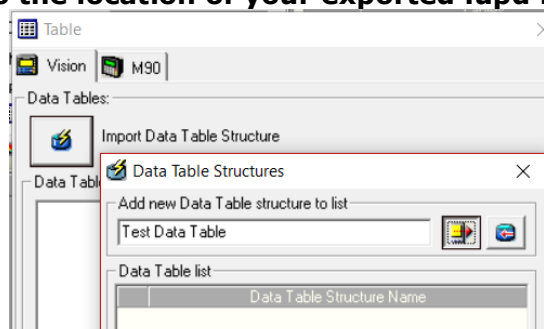


Now your schedule is set up and Data Xport will upload the data from the PLC at the intervals defined here. We now need to choose which data that Data Xport will upload from the PLC. You can either upload a region of operands (i.e. MI100-MI200) [Jump to step 10] or you can upload the entirety of a data table within the PLC.

- 6) To export data from a table within the PLC first double click on the 'Tables' box and click the 'Add' button from the toolbar within the window that appeared – Now you will need to import the struct of the data table you are planning to upload from, you can either upload this struct from the PLC or save a .upd file from your data table within VisiLogic and import this to your DataXport project. – Either way Click the button next to 'Import Data Table Structure'

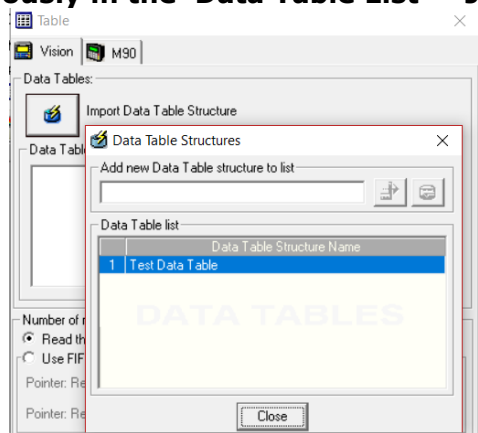


- 7) Now you need to name the data table you are about to import and either select 'Upload from PLC' (Automatically uploads all Data tables found within the connected PLC) or 'Import file from VisiLogic' (Which will ask you to navigate to the location of your exported .upd file)

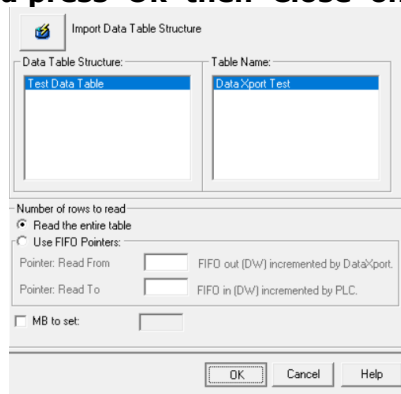


Data Logging from Data Xport

- 8) Once the Table has been successfully imported it will appear with the title you gave it previously in the 'Data Table List' – Just press 'Close'**

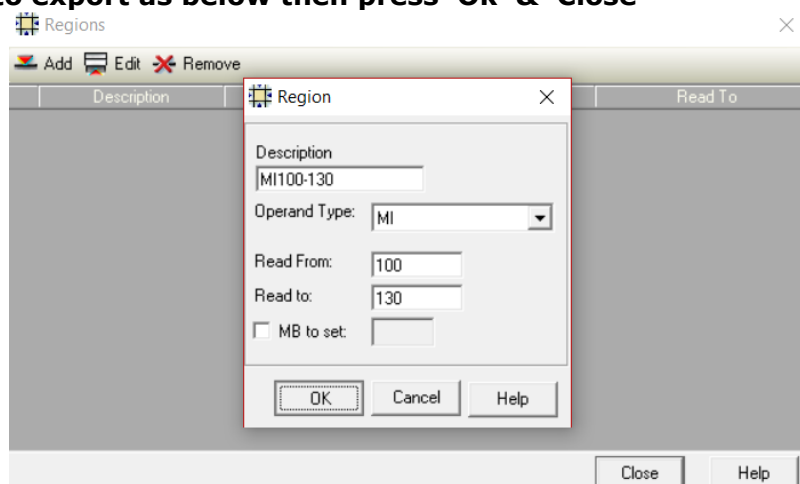


- 9) Now your data table is imported you can select it from the list within 'Data Table Structure' and press 'OK' then 'Close' on the next window**



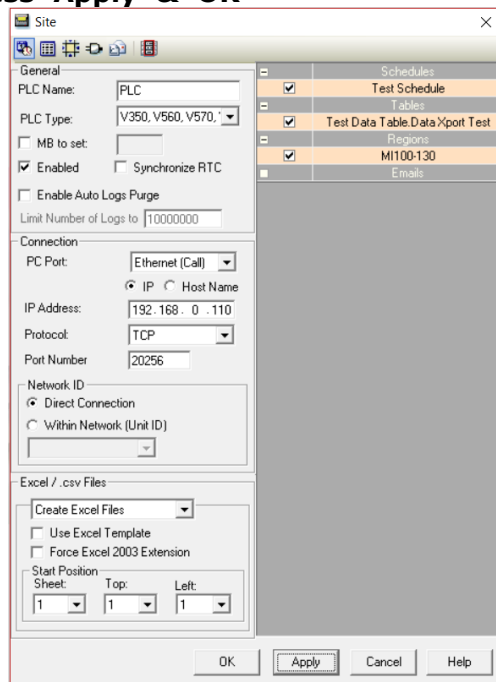
Now your data table is setup and ready to be uploaded from the PLC at the schedule set. If you do not have a data table within your PLC or would like to just upload a region of Operand values from the PLC you can set up 'Regions' within Data Xport as explained below.

- 10) To export values from a region of pre-defined operands first double click on the 'Regions' box and click the 'Add' button from the toolbar within the window that appeared – Now you need to name these regions you are about to set up using the description, select an operand type that you wish to export from the PLC and set the range of the selected operand that you wish to export as below then press 'Ok' & 'Close'**



Data Logging from Data Xport

- 11) Tick the box next to the Schedule, Data Table and/or Regions you have created and then press 'Apply' & 'OK'**



Now you have setup the comms to the PLC, created a schedule to upload the data from the PLC and selected which data should be uploaded, your 'site' will appear in the list of 'Sites in Project'

- 12) You now need to set a location on your PC to save the exported .xls/.csv files created – Go to 'Project' > 'Excel/.csv Files Properties' > and locate a folder on your PC that you wish these files to be saved.**
- 13) All that is left to do now is press the 'Run Project' Button and a 'Calls Log' window will appear showing the status of the calls to the PLC which will call for the information requested at the intervals defined in the schedule. And save the data in an .xls or .csv format in the location on the PC defined by the user.**



Log Status							
No.	Site Name	Call Time	Status	Call Trigger	Retry Index	Retries Count	First Call Time
3	PLC	19/12/2018 08:33:00	Ethernet Connection ...	Test Schedule	1	3	19/12/2018 08:33:00
2	PLC	19/12/2018 08:32:00	Ethernet Connection ...	Test Schedule	1	3	19/12/2018 08:32:00
1	PLC	19/12/2018 08:31:00	Ethernet Connection ...	Test Schedule	1	3	19/12/2018 08:31:00