

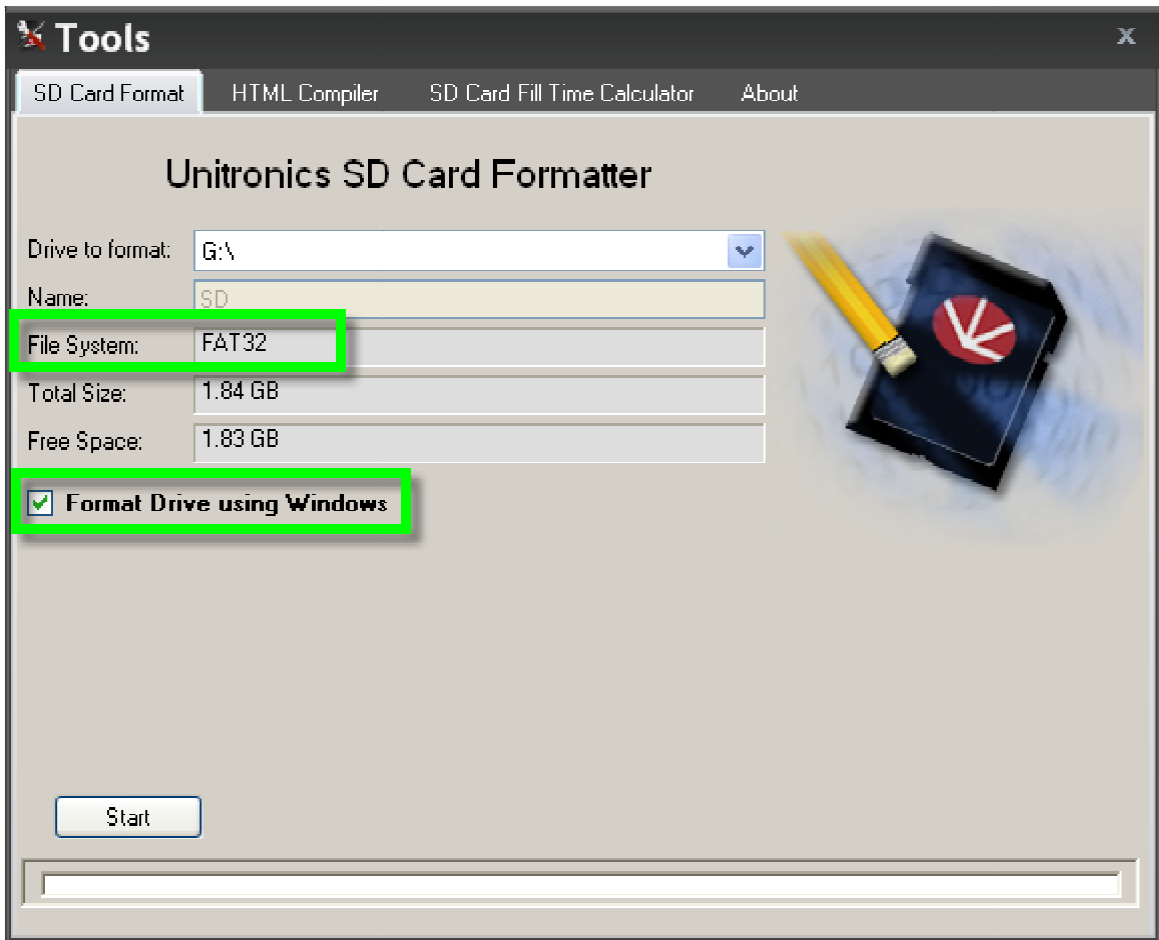
# **SD Card App Install Procedure**

<b>Format the SD Card.....</b>	<b>1</b>
<b>Prepare file in VisiLogic.....</b>	<b>2</b>
<b>Load via Info Mode.....</b>	<b>3</b>

(January 19, 2011)

## Format the SD Card:

- ❖ It is necessary to format the SD card using Unitronics SD Card Suite.
- ❖ These tools are available for download free of charge from our website:
- ❖ [www.unitronics.com](http://www.unitronics.com) → support → downloads → Unitronics SD Card Suite: free download
- ❖ The SD Card Formatter is an available option under the “Tools” program of the suite.
- ❖ Make sure to select the “Format Drive using Windows” option first.
- ❖ After, uncheck the box and format again.
- ❖ If you experience problems with the SD card being recognized by the PLC, see notes below:



### NOTE:

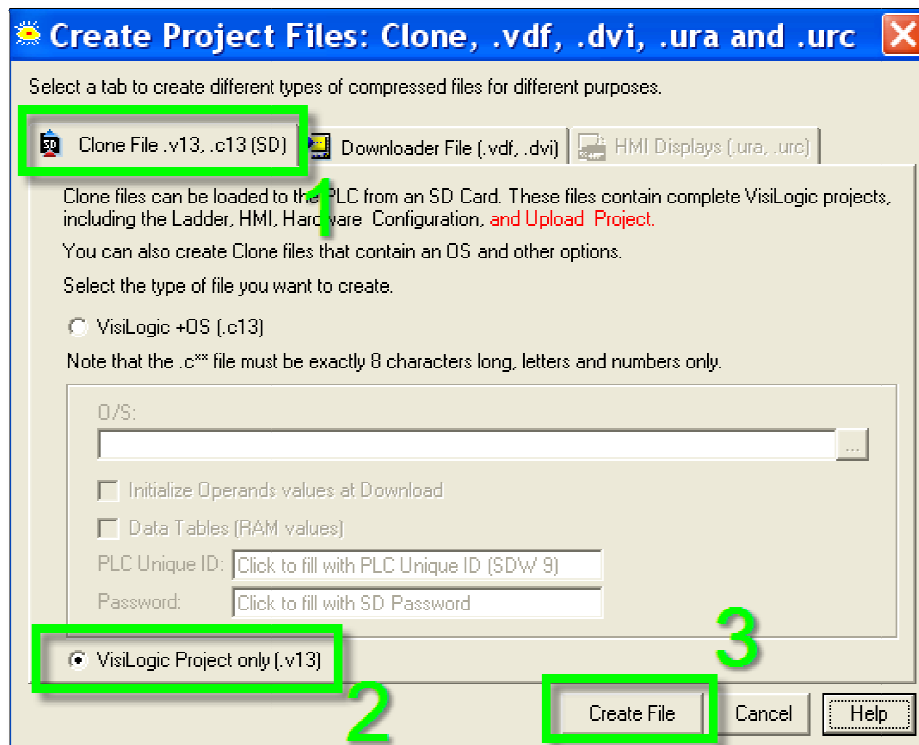
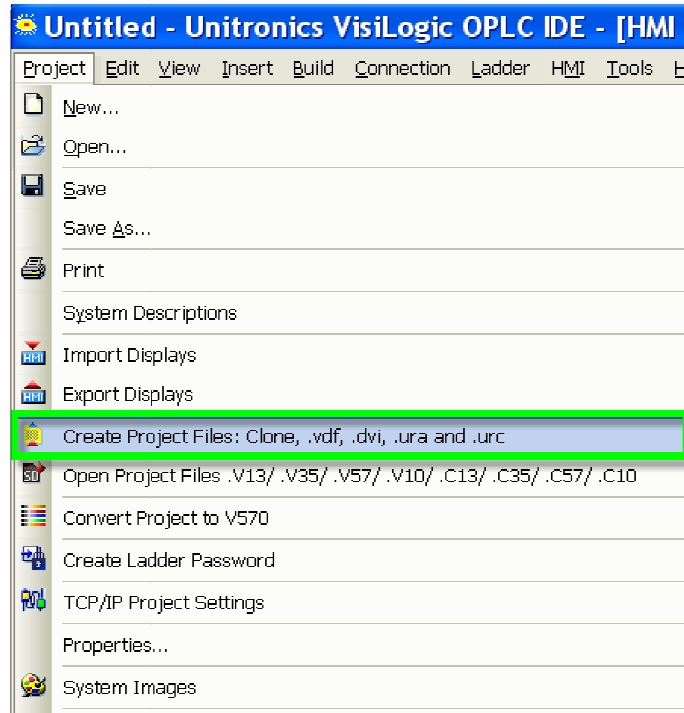
*(Built-in laptop card readers tend to cause problems, therefore external USB to SD adapters are recommended)*

*(In certain cases, using the Panasonic formatting tool below first, then using Unitronics tools after can also help)*

<http://panasonic.jp/support/global/cs/sd/download/index.html>

## Prepare File in VisiLogic:

- ❖ First it is necessary to prepare a project file (\*.vXX) for the SD card.
- ❖ Place the newly created file in the “USER\_APP” folder of the SD Card.



## Load via Information Mode:

- ❖ With the SD Card inserted, hold down the touch screen for a few seconds until Info Mode opens.
- ❖ Enter the Info Mode password (default : 1111)
- ❖ Select “SD”
- ❖ Select “Application”
- ❖ Select “Upload to PLC”
- ❖ Select previously created file to install.

**NOTE:**

*(SD operations can also be programmed into the application’s ladder logic now with latest VisiLogic version)*