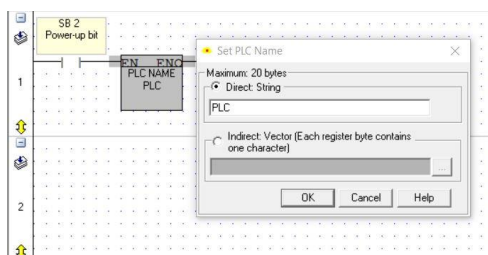


Setting Up Vision PLC for Ethernet Connection

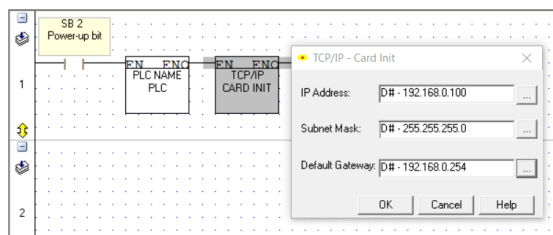
Setting Up Vision PLC for Ethernet Connection

Note: Exact settings for IP addresses, PLC name and Socket/Port number will vary depending on your application, please see accompanying (IP Addresses.PDF) for more information on how to set these up correctly.

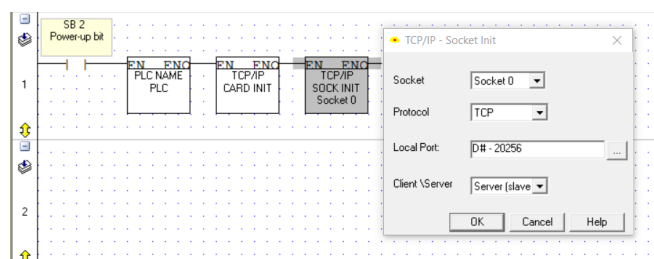
1. We will use a direct contact of SB 2 to initiate the Ethernet port on the first scan after Power-up.
2. You will need to set the PLC name in your program using the 'Set PLC name' function block found in the 'Com' dropdown menu – PLC name can be any combination of alpha-numeric characters up to 20 in length. *You can either set this up using a 'Direct: String' to maintain a constant PLC name or 'Indirect: Vector' which you can link to an integer value so it can be changed from the HMI.*



3. You will also need to initialize the ethernet card with relevant IP address info using the 'Card Init' function found in 'Com > TCP/IP > Card Init' – *These IP address setting will vary depending on your application, for more info please see IP Addresses.PDF*

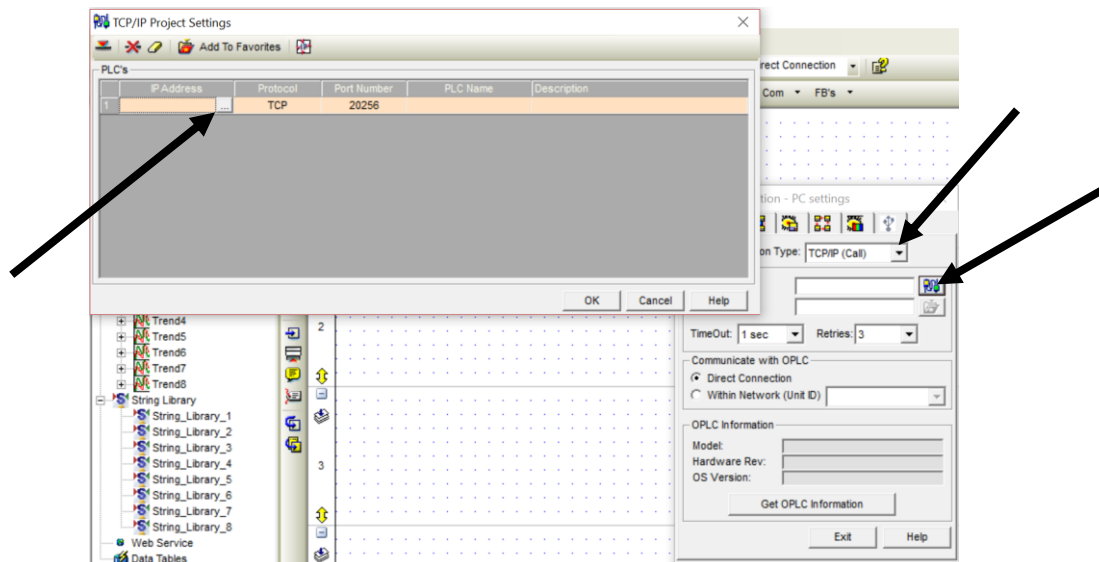


4. The last part of the setup is initializing the socket parameters with the 'Socket Init' function found in 'Com > TCP/IP > Socket Init' – *The 'Local Port' setting will vary depending on your application. 20256 is a good place to start but be aware of other devices on this address so as there are no overlaps.*

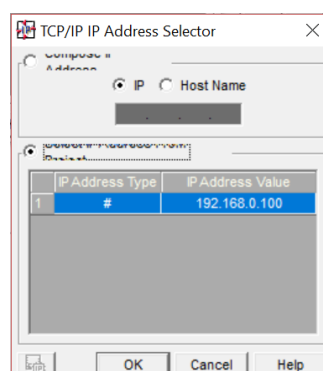


Setting Up Vision PLC for Ethernet Connection

- If you wish to program the PLC via the newly configured Ethernet port – Open the Communication window and select 'TCP/IP (Call)' from the 'Select Connection Type' dropdown menu and press the settings button on the right to open the TCP/IP connection settings. From here you can set the comms IP Address by clicking the ellipsis buttons.



- From here you can enter your IP address manually or choose the option to select the address from project automatically. Once the IP address matches that in the PLC you just need to select the Port number and PLC name, connect ethernet cable between computer and PLC (either direct or via network) and communication can be established the same as serial/ USB connection.



	IP Address	Protocol	Port Number	PLC Name	Description
1	192.168.0.100	TCP	20256	PLC	

NOTE: You can also view/change the TCP/IP setting directly from the PLC via Info mode –

Set IP address-

Open 'Info mode > Ethernet > Enter desired IP Address settings'

View PLC Name-

Open 'Info mode > Version > Software > See PLC name;'

Tom Johnson
July 2019